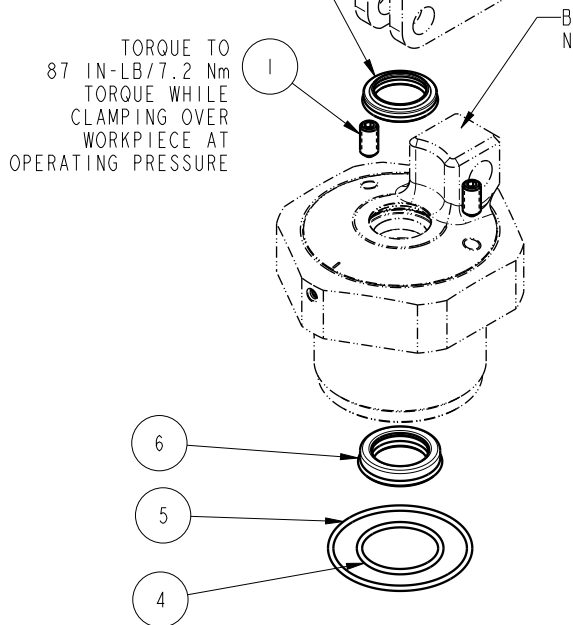
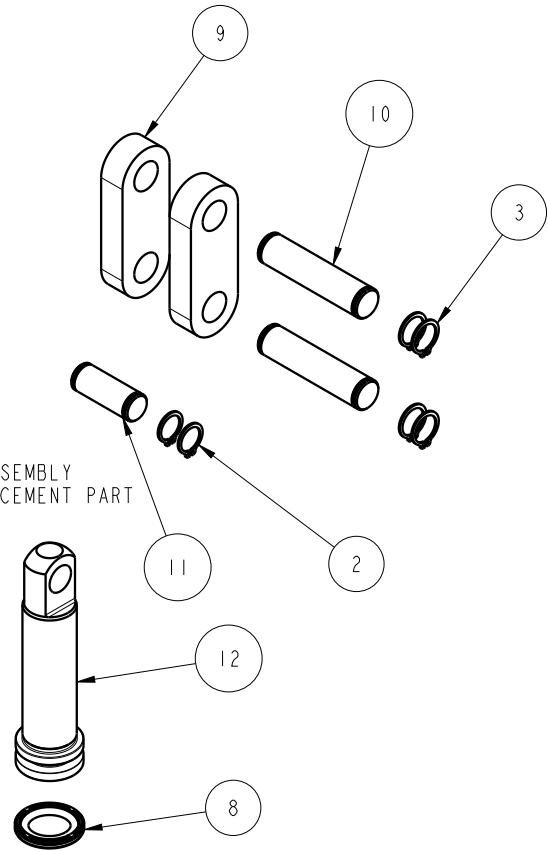


SECTION A-A
SCALE 0.600

NO	QTY	PART NO	DESCRIPTION	STD SEAL KIT
1	2	21500319	SCREW, SET, CUP PT, M6 X 1 X 12	
2	2	23050036	RING, RTNG, EXT, 0.394	X
3	4	23050037	RING, RTNG, EXT, 0.438	X
4	1	39051185	O-RING (-022), 1 X 1/16 X 1-1/8	X
5	1	39051186	O-RING (-031), 1-3/4 X 1/16 X 1-7/8	X
6	1	39052061	SEAL, ROD, RSD, 18, 85A, AU	X
7	1	39053042	SEAL, WIPER, SNAP IN, WED, 18, 94A, AU	X
8	1	39056033	SEAL, CAP, PISTON, 22.5, 94A, AU	X
9	2	81600148	LINK, LC, 7MP α , 50B	
10	2	81600153	PIN, LINK, LC, 7MP α , 50B	
11	1	81600158	PIN, PLUNGER, LC, 7MP α , 50B	
12	1	81600253	PLUNGER, LC, TL360, DA, 2400/10.4kN	
N/A	N/A	60160211	KIT, SEAL, ASSY, LC, CM, TL360, DA, 24001b	NOTED



BODY SUB ASSEMBLY
NOT A REPLACEMENT PART



PARTS LIST



VEKTEK, INC.
1334 E. SIXTH AVE. P.O. BOX 625
EMPORIA, KS. 66801 U.S.A.

ASSEMBLIES AFFECTED
16-4222-00

PARTS LIST, ASSY, LC, CM, TL360, DA, 24001b

ROTARY LUG

SIZE
A PL1631

REV
B

B	5103	RELEASE	ALS	5/30/23
REV	IN ACCORDANCE WITH ECN	EFFECTIVE DATE	REVISED BY	DATE
DRW BY:	A. THOMSEN	DRAWING STATUS: Released		
DATE:	05-MAY-2020	PRODUCTION APPROVED FOR RELEASED STATUS ONLY		

FORM FEG035_PL_ASIZE, REV. B

SHEET 1 OF 1